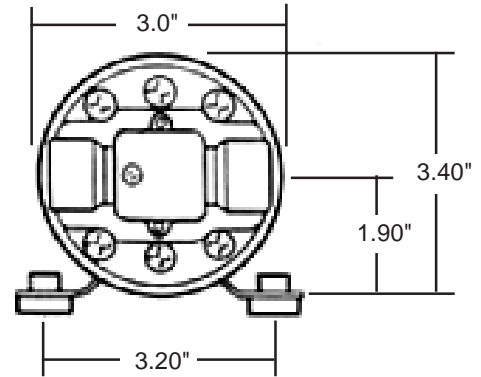
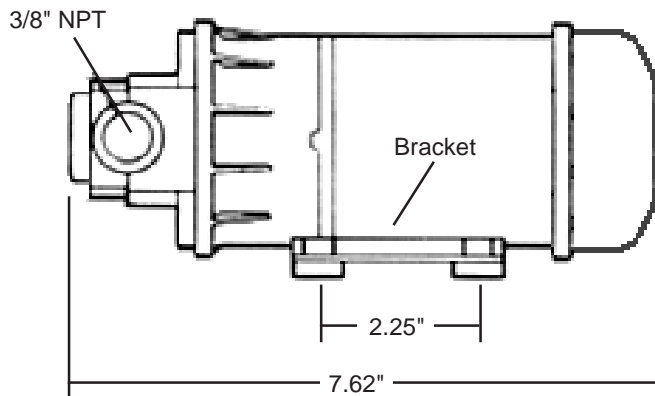


Electric Fluid Circulation Pump

12v fluid circulation pump- suitable for various applications- transmission/differential cooling, turbo oiling, water intercoolers, cool suits. Motor with ball bearing drive throughout and integral cooling fan for long life. Self priming (pump can be located above liquid level). High temperature capable up to 300 degrees (nylon pump head/housing with viton diaphragm/seals). Pump head can be indexed 90 degrees for convenient fluid connections (3/8 NPT female). Flow Rate 1.0-2.0 GPM and up to 54 psi. working pressure. Length 7.62" , weight 3.5 lbs, current 12 volt 8 amp max.



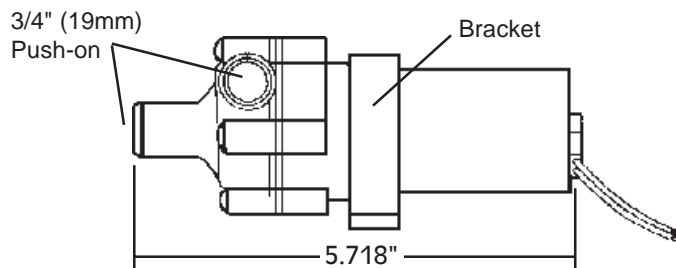
Electric Fluid Pump 17-522HT \$185.00



Turbo Heat Exchanger Water Circulation Pump

This small 12v fluid circulation pump is very well suited for turbo water intercoolers and heat exchangers. Magnetic drive motor with sealed pump chamber for long life even with continuous use (up to 2500 hrs.). High temperature capable (up to 212 degrees). Fluid connections for 3/4" i.d. (19mm) hose. Flow Rate 4 GPM at up to 1.7 psi. working pressure. Length 5.718", weight .825 lbs, current 12 volt 1.2 amp max.

Water Circulation Pump ACP1 \$174.50





Electric Water Pump and Controller

In line electric water pump designed to take the place of standard mechanical belt driven pumps in most engine applications. Pump is both light weight (2 lbs.) and compact in size (5"x5"x3") with directional inlet/outlet fittings to be inserted in the lower radiator hose. Made from durable Nylon it is a centrifugal design with a 300-1300 gallon per hour flow rate depending on voltage 4-14 V DC. The pump is controlled remotely by a fully adjustable microprocessor unit. The control unit uses a thermo probe to sense temperature. Set the controller to the desired temperature and it will automatically adjust the rate of coolant flow by regulating the voltage to the pump. The water pump can supply coolant at a flow rate based on temperature, independent of engine RPM, which equates to more efficient cooling and can even be wired to run-on after hot engine shut down reducing heat soak.

Electric Water Pump ACP2 \$269.00
Pump Controller ACP2C \$165.00

Technical Specifications (Water Pump)

Operating Voltage	4V to 14.5V DC
Maximum Current	7.5A
Flow Rate	300-1300 gal/hr @ 13V DC
Operating Temp.	-5 F to 270 F
Pump Design	Clockwise centrifugal with volute chamber
Motor Life	2000 hrs continuous
Pump Weight	2 Lbs
Pump Material	Nylon 66
Maximum Pressure	50 psi
Hose Sizes	1 1/4" to 2"
Dimensions (HWD)	5" x 5" x 3"

Technical Specifications (Electric Control Unit)

Input Voltage	12V to 14.5V DC
Output Voltage	3V to 12V DC
Maximum Current	7.5A
Operating Temp.	-5 F to 140 F
Controller Type	Adjustable Microprocessor
Sensor Type	Thermal Coolant Sensor
Controller Weight	10 oz.
Dimensions (HWD)	3 3/4" x 2 9/16" x 2"

